



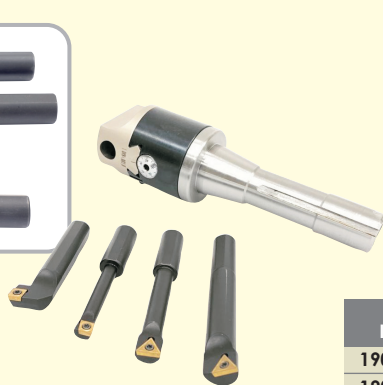
R8 BORING HEAD SETS -WITH INDEXABLE BORING BARS

- Indexable boring bars take carbide inserts (included).
- Head features a threaded back for interchangeable shanks.
- Set complete with Boring Head, Boring Shank, Indexable Boring Bars, Torx & L-shape Hex Wrenches and fitted carrying case.
- A micrometer lead screw provides 0.001" direct reading accuracy and ease of adjusting.

- 1 DIV = 0.001 meaning on the 0-50 dial, when turning the dial by 1 division/graduation, the boring head's travel is 0.001" in radius movement, 0.002" in diameter movement; on the 0-100 dial, when turning the dial by 1 division/graduation, the boring head's travel is 0.0005" in radius movement, 0.001" in diameter movement.



1906-0201 Shown



1906-0205 Shown



Item#	Boring Head (Dia.)	Shank	No. of Boring Bars	Boring Bar Hole Size	Sale (F)
1906-0201	2"	R8	4	1/2"	185.09
1906-0205	3"	R8	5	3/4"	314.93

C6 GRADE: carbide for steel and alloy steel

SPECIFICATIONS:

	2" HEAD	3" HEAD
Graduations	0.001"/0-50	0.001"/0-100
Boring Head Thread	1-1/2"-18 T.P.I.	1-1/2"-18 T.P.I.
Offset	5/8"	1"
Crosshole	1/2"	3/4"
Shank Thread (Drawbar End) R8	7/16"-20 UNC	7/16"-20 UNC
Min. Boring Diameter	0.394"	0.394"
Max. Boring Diameter	5.906"	7.874"
Max. Boring Depth	1.970"	3.150"

BORING BAR SET INCLUDED

Set	Shank	Min. Bore	(Inch) OAL	Bore Depth	For Holder	Uses Insert	Uses Torx Wr.	Uses Screw
4	1/2	5/16	3-3/8	1-7/8	B10C2	CCMT21.5	T-8	M2.5x5.0
		7/16	3-3/4	2-1/4	B12T2	TCMT21.5		
		9/16	4-1/8	2-3/4	B16T2	TCMT21.5		
		3/4	2-7/8	1-7/16	R100C2	CCMT21.5		
5	3/4	5/16	3-3/8	1-7/8	D10C2	CCMT21.5	T-8	M2.5x5.0
		7/16	3-3/4	2-3/8	D12T2	TCMT21.5		
		1/2	4-1/8	2-3/4	D16T2	TCMT21.5		
		11/16	5-5/16	3-7/8	D20T2	TCMT21.5		
		1-1/16	5-1/8	3-9/16	R125C3	CCMT32.5		

R8 BORING HEAD SET - WITH HSS BORING BARS

- Rugged design allows excellent rigidity for chatter-free boring.
- Head features a threaded back for interchangeable shanks.
- Set complete with Boring Head, Boring Shank, Solid HSS Boring Bars & L-shape Hex Wrenches and fitted carrying case.
- Dial on head with 0.001" graduation for accurate hole sizing.

SPECIFICATIONS:

	2" HEAD
Boring Head Thread	1-1/2"-18 T.P.I.
Offset	5/8"
Crosshole	1/2"
Shank Thread (Drawbar End)R8	7/16"-20 UNC
Min. Boring Diameter	0.300"
Max. Boring Diameter	5.700"
Max. Boring Depth	2.300"



Item#	Boring Head (Dia.)	Shank	No. of Boring Bars	Boring Bar Hole Size	Sale (F)
1906-5935	2"	R8	5	1/2"	110.37

NEW PRODUCTS
SAVE UP TO 15%
 * Till December 31, 2023 *

Dasqua® TAPER BORE GAGES
 -For Measuring Hole Diameter

- Made of polished stainless steel.
- Sizes engraved to last longer and read easily.

Overall Length: 7-1/2"



Mainly used to measure some deeper slots, holes and tube diameters.



Item#	Range	Graduation	Accuracy	Sale (F)
1051-0005	1 - 6.5mm	0.1mm	±0.05	47.16
1051-0008	3 - 15mm	0.1mm	±0.05	50.31

Dasqua® CIRCULAR TAPER BORE GAGES
 -For Measuring Small Holes

- Used to measure grooves and gaps or places that are hard to reach.
- Made of stainless steel
- Protective cap to cover the tip to avoid injuring the user.

Overall Length: 4.65"



Item#	Range	Graduation	Sale (E)
1051-2010	0.1-5mm	0.1mm	65.34

Dasqua® METRIC OUTSIDE MICROMETER

- Strictly made in accordance with **DIN 863**.
- With ratchet stop for constant pressure.
- Spindle thread hardened, ground and lapped for ultimate accuracy.
- Clear graduations laser-etched on satin chrome finish for easy reading.
- With spindle lock.
- Made with thermal protection frame.

DIN 863



Item#	Range	Graduation	Case	Sale (F)
4111-6405	0-25mm	0.01mm	Plastic Box	28.08



Dasqua® SHOCK-PROOF 6" DIAL CALIPER WITH FREE DEPTH GAGE ATTACHMENT

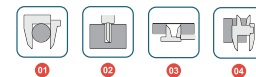
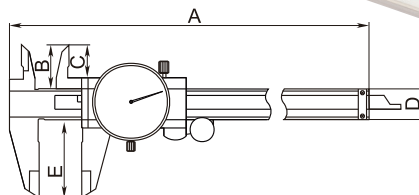
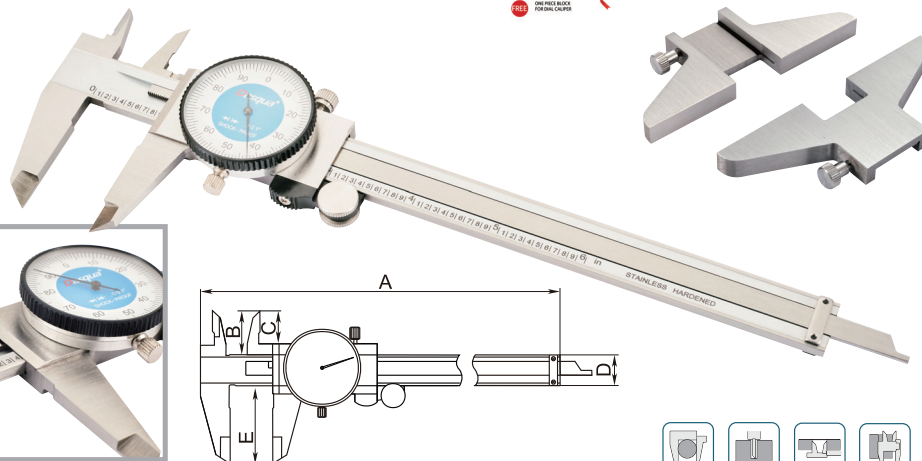
DIN 862 SHOCK-PROOF

- The entire body jaws are vacuum hardened with uniform hardness, guaranteeing longer wear-resistance and longer service life.
- The upper and lower parts of the slide scale body are precisely ground to ensure smooth operation.
- Tough shock-proof gearing
- Use for measuring outside diameter, inside diameter, step and depth
- Made of solid stainless steel
- Strictly made in accordance with DIN862
- Distinct lines and figures laser etched against satin chrome finish
- With locking screw for stable reading
- Large dial for easy and clear reading
- Includes dial caliper, free depth gage attachment and fitted case.



DOUBLE SHOCK-PROOF

Item 2210-8280
Sale Price \$5621 (F)

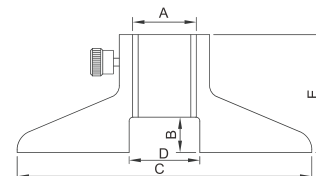


Caliper

Range	Graduation	(mm)					Accuracy
		A	B	C	D	E	
0-6"	0.001"	236	21	16.5	16	40	0.001"

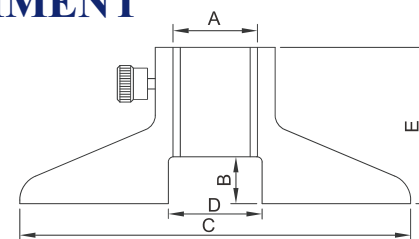
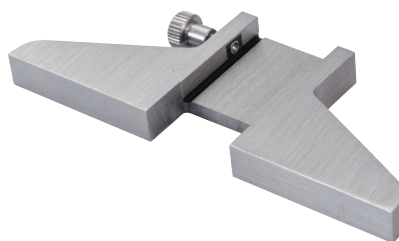
Depth Base

(mm)					Application
A	B	C	D	E	
16.5	9	75	18	30	Base Length 75mm; for width of the beam 16mm



Dasqua® CALIPER DEPTH BASE ATTACHMENT

- Increases the stability of the caliper when measuring the depth of a hole or recess.
- Made of solid stainless steel
- Measuring surfaces ground for ultimate accuracy



Item#	(mm)					Application	Sale (F)
	A	B	C	D	E		
3001-1001	16.5	9	75	18	30	Base Length 75mm; for width of the beam 16mm	18.65

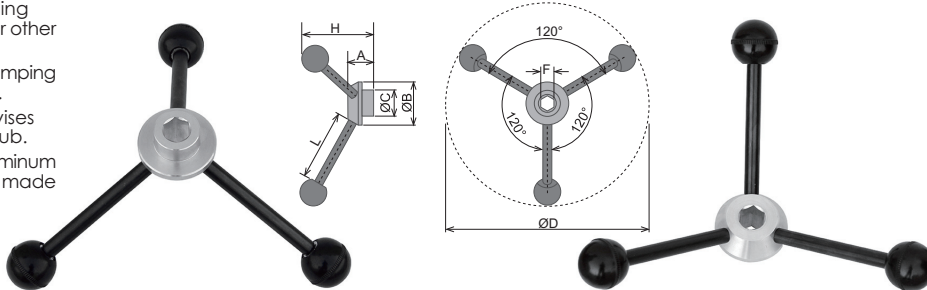
NEW PRODUCTS

SAVE UP TO 15%

* Till December 31, 2023 *

Pro-Series VISE SPEED HANDLES

- Designed for milling vises and used for other applications.
- Speed up the clamping force of the vise.
- Fits most milling vises with same hex hub.
- Hub made of aluminum and handles are made of steel.



SPECIFICATIONS:

Item#	Hex Hub (F)	Max Dia. (D)	Depth (H)	Hub Height (A)	Hub Dia. (B)	Dia. (C)
3906-0200	9/16	12"	4-1/2	1-3/8	2-1/2	1-3/8
3906-0201	5/8	12"	4-1/2	1-3/8	2-1/2	1-3/8
3906-0202	3/4	12"	4-1/2	1-3/8	2-1/2	1-3/8

Fits 9/16" Hex Hub
Item 3906-0200
Sale Price **\$2746** (F)

Fits 5/8" Hex Hub
Item 3906-0201
Sale Price **\$2746** (F)

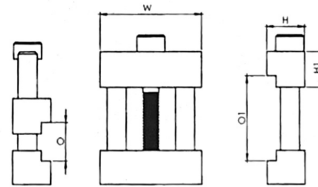
Fits 3/4" Hex Hub
Item 3906-0202
Sale Price **\$2746** (F)

QUICK CLAMP WORK STOPS - For Machine Vise

- Fits mill vises with 3/8~7/8" thick jaws
- Steel body

- Very handy for small parts that do not require the full length of vise jaws.

- Clamps quickly & easily to the top of existing hard jaws or soft jaws



3/8~3/4" Capacity
Item 3906-2131
Sale Price **\$1173** (F)

1/2~7/8" Capacity
Item 3906-2132
Sale Price **\$1173** (F)

SPECIFICATIONS:

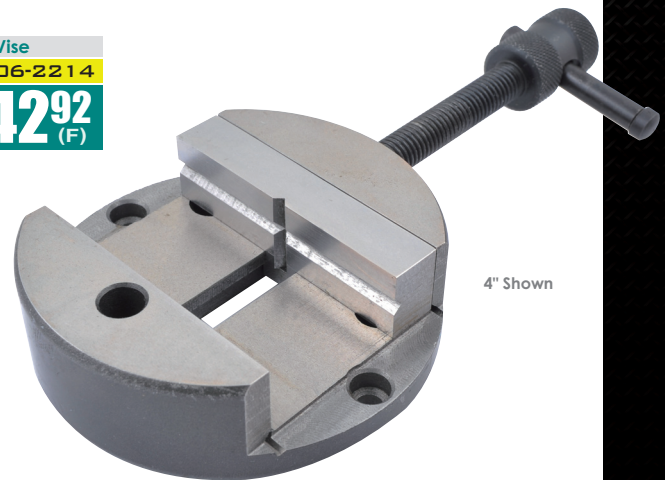
Item#	Min. Cap. (O)	Max Cap. (OI)	Width (W)	Thick. (H1)	Thick. (H)
3906-2131	3/8	3/4	1	3/8	3/8
3906-2132	1/2	7/8	1-1/2	1/2	1/2

3" & 4" ROUND MACHINE VISE FOR ROTARY TABLES

- Made from tool steel.
- Hardened and ground.
- Low profile.
- Mounting holes for easy attachment to rotary table or slides on milling table.
- Mounting T-nut and cap screws included.
- V-groove for holding round parts.

3" Vise
Item 3906-2213
Sale Price **\$4077** (F)

4" Vise
Item 3906-2214
Sale Price **\$4292** (F)



4" Shown

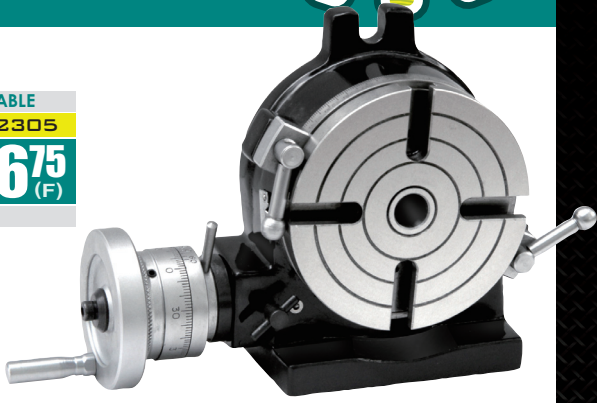
SPECIFICATIONS	3"	4"
T-nut Width	7.8mm	7.6mm
Jaw Width	64mm	80mm
Jaw Depth	20mm	20mm
Jaw Opening	28mm	40mm
Base Diameter	80mm	100mm

NEW PRODUCTS
SAVE UP TO 15%
 Till December 31, 2023

5" HORIZONTAL & VERTICAL PRECISION ROTARY TABLE

- Rotary table is precision ground.
- Low profile design.
- Worm gear is easily disengaged for free rotation.
- Rotary table parts are strategically positioned for easy access.
- The one piece worm and shaft are hobbled from solid alloy steel.
- Graduated 360 degrees.
- 10 second vernier reading.
- One rotation of handle equals 4° on collar.

5" ROTARY TABLE
Item 3906-2305
Sale Price **\$216⁷⁵** (F)
 Wt. 20 Lbs



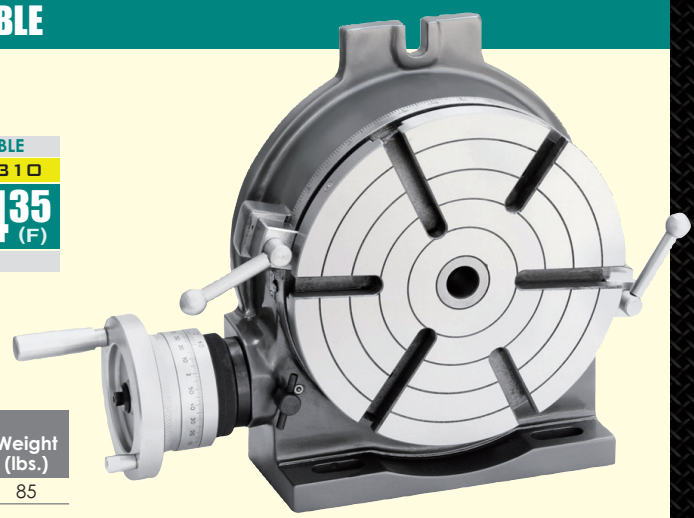
SPECIFICATIONS:

Table Size (Dia.)	Center Hole	Vert. Center Height	Horizontal Overall Height	Vertical Overall Height	Number of T-slots	T-slot Width	Gear Ratio	Weight (lbs.)
4.92"	2M.T.	3-5/8"	3.3"	7"	4	7/16"	90:1	20

10" HORIZONTAL & VERTICAL PRECISION ROTARY TABLE

- Rotary table is precision ground.
- Low profile design.
- Worm gear is easily disengaged for free rotation.
- Rotary table parts are strategically positioned for easy access.
- The one piece worm and shaft are hobbled from solid alloy steel.
- 10 second vernier reading.
- One rotation of handle equals 4° on collar.
- Graduated 360 degrees.

10" ROTARY TABLE
Item 3906-2310
Sale Price **\$414³⁵** (F)
 Wt. 85 Lbs



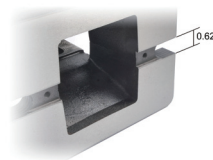
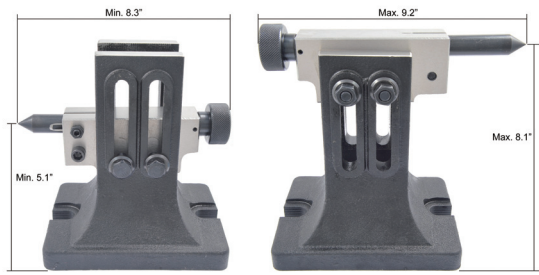
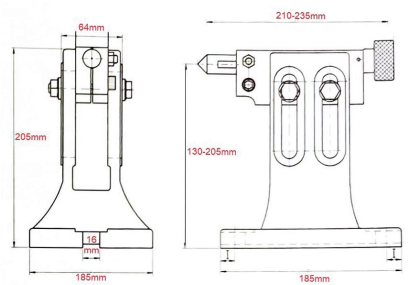
SPECIFICATIONS:

Table Size (Dia.)	Center Hole	Vert. Center Height	Horizontal Overall Height	Vertical Overall Height	Number of T-slots	T-slot Width	Weight (lbs.)
10"	3M.T.	6.5"	4.5"	12.6"	6	0.55"	85

ADJUSTABLE TAILSTOCK - For Rotary Tables

- Adjustable height: 5.2~8.1"

Fits 8~12" Rotary Table
Item 3906-2411
Sale Price **\$113²²** (F)



The height can be varied when working with different index centers, while the angle of inclination can be changed for various machining applications. In addition, the tip of the carrier is finely rotatable. Clamping is made by tightening the bolts.



NEW PRODUCTS
SAVE UP TO 15%
 Till December 31, 2023

6" ROTARY TABLE KIT

KIT INCLUDES:

Rotary Table, Dividing Plates, Tail Stock, Clamping Kit & 4-Jaw Self-Centering Lathe Chuck With Mounting Plate

- Rotary table is precision ground.
- Low profile design .
- Worm gear is easily disengaged for free rotation.
- Rotary table parts are strategically positioned for easy access.
- The one piece worm and shaft are hobbled from solid alloy steel.
- 10 second vernier reading.
- One rotation of handle equals 4° on collar.
- Graduated 360 degrees

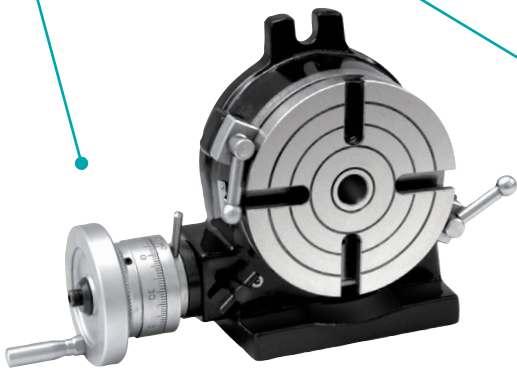
6" Rotary Table Kit	
Item	3906-2316
Sale Price	\$548²⁵ (F)
Wt. 51 Lbs	

BUY A COMPLETE KIT & SAVE!

Table Size (Dia.)	Center Hole	Vert. Center Height	Horizontal Overall Height	Vertical Overall Height	Number of T-slots	T-slot Width
6"	2MT	3.9"	3.1"	8.1"	4	0.43"

ROTARY TABLE

- Rotary tables can be used in a horizontal or vertical position and with a lathe chuck.



DIVIDING PLATES

- Suitable for rotary tables.
- Set includes: index plates, crank handle, 3 screws, sector & U washer.

SET INCLUDES:

Plate A - 26, 30, 34, 38, 41, 44, 47, 51, 57, 28, 32, 37, 39, 43, 46, 49, 53, 59

Plate B - 62, 67, 71, 77, 81, 87, 91, 97, 63, 69, 73, 83, 89, 93, 99



Dividing Plate Set

ADJUSTABLE TAIL STOCK

- Adjustable height: 3.2~4.3"



Tail Stock



Rotary Table & 4-Jaw Chuck with Aluminum Plate



Clamping Kit

4" 4-JAW SELF-CENTERING LATHE CHUCK

- Made of high grade tool steel.
- Universal scroll chuck.
- 2 sets of solid jaws included (ID & OD).
- Chuck wrench included.

16 PC CLAMPING KIT

- Drop forged steel.
- All parts are case hardened and heat treated.

EACH KIT CONTAINS:

For 6" Rotary Table: 16PC Two pc each of Step Clamp, Step Block, and Four PC each of Stud, T-slot Nut & Flanged Nut.



8" ROTARY TABLE KIT

KIT INCLUDES:

Rotary Table, Dividing Plates, Tail Stock, Clamping Kit & 4-Jaw Self-Centering Lathe Chuck With Mounting Plate

- Rotary table is precision ground.
- Low profile design .
- Worm gear is easily disengaged for free rotation.
- Rotary table parts are strategically positioned for easy access.
- The one piece worm and shaft are hobbled from solid alloy steel.
- 10 second vernier reading.
- One rotation of handle equals 4° on collar.
- Graduated 360 degrees

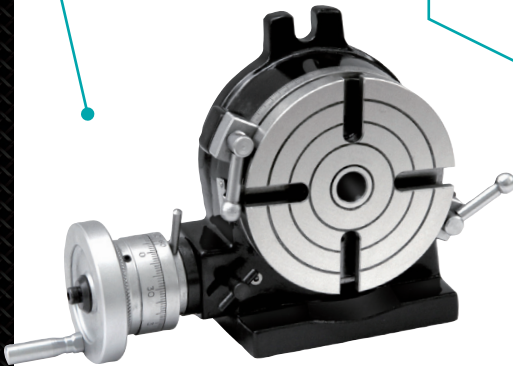
8" Rotary Table Kit	
Item	3906-231B
Sale Price	\$726⁷⁵ (F)
Wt. 111 Lbs	

BUY A COMPLETE KIT & SAVE!

Table Size (Dia.)	Center Hole	Vert. Center Height	Horizontal Overall Height	Vertical Overall Height	Number of T-slots	T-slot Width
8"	3MT	5.3"	4.1"	10.4"	4	0.55"

ROTARY TABLE

- Rotary tables can be used in a horizontal or vertical position and with a lathe chuck.



Rotary Table & 4-Jaw Chuck with Aluminum Plate

DIVIDING PLATES

- Suitable for rotary tables.
- Set includes: index plates, crank handle, 3 screws, sector & U washer.

SET INCLUDES:

- Plate A** - 26, 30, 34, 38, 41, 44, 47, 51, 57, 28, 32, 37, 39, 43, 46, 49, 53, 59
- Plate B** - 62, 67, 71, 77, 81, 87, 91, 97, 63, 69, 73, 83, 89, 93, 99



Dividing Plate Set

ADJUSTABLE TAIL STOCK

- Adjustable height: 4.5~5.7" for 8" Rotary Table



Tail Stock

CLAMPING KIT



10 PC CLAMPING KIT

- Drop forged steel.
- All parts are case hardend and heat treated.

EACH KIT CONTAINS:

For 8" Rotary Table: Two pc each of Step Clamp, Step Block, Stud, T-slot Nut & Flanged Nut.

5" 4-JAW SELF-CENTERING LATHE CHUCK

- Made of high grade tool steel.
- Universal scroll chucks.
- 2 sets of solid jaws included (ID & OD).
- Chuck wrench included.



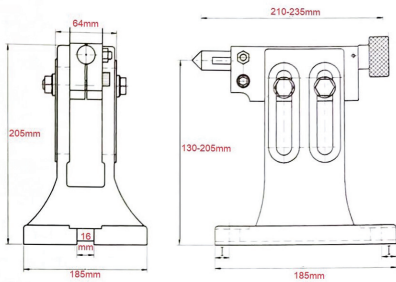
NEW PRODUCTS
SAVE UP TO 15%
 Till December 31, 2023

ADJUSTABLE TAILSTOCKS - For Rotary Tables



Item#	Fits Table	Adjustable Height (Min.~Max.)	Weight (lbs.)
3906-2406	4~6"	42~92mm/1.65~3.62"	6.2
3906-2407	6~8"	93~125mm/3.66~4.92"	22.5

The height can be varied when working with different index centers, while the angle of inclination can be changed for various machining applications. In addition, the tip of the carrier is finely rotatable. Clamping is made by tightening the bolts.



Fits 4~6" Rotary Table
Item 3906-2406
Sale Price \$6426 (F)

Fits 6~8" Rotary Table
Item 3906-2407
Sale Price \$6899 (F)

Dasqua® METRIC OUTSIDE MICROMETERS & SET

DIN 863

- Strictly made in accordance with **DIN 863**.
- With ratchet stop for constant pressure.
- Spindle thread hardened, ground and lapped for ultimate accuracy.
- Clear graduations laser-etched on satin chrome finish for easy reading.
- With spindle lock.
- Carbide measuring surfaces ground for longer service life.
- Standards included above 0-25mm micrometer.
- Fitted case.

3PC Set
 0~75mm Range
Item 4111-8206
Sale Price \$11930 (F)

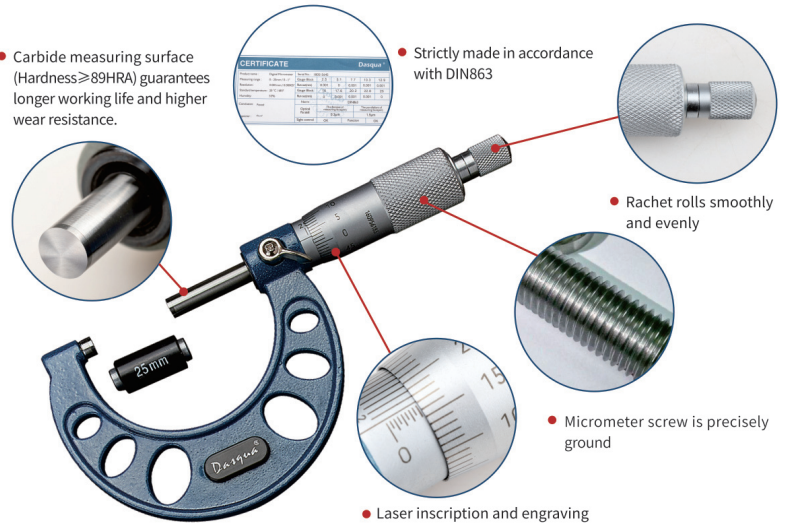
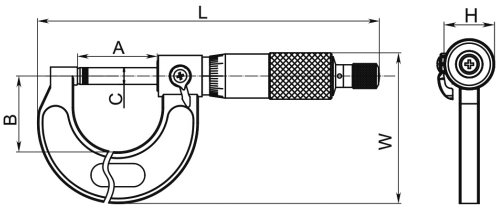
- Carbide measuring surface (Hardness ≥89HRA) guarantees longer working life and higher wear resistance.

- Strictly made in accordance with DIN863

- Ratchet rolls smoothly and evenly

- Micrometer screw is precisely ground

- Laser inscription and engraving on barrel and thimble satin chrome finish



.01MM GRADUATION

Item#	Range	(mm)						Accuracy	Sale (F)
		A	B	C	L	W	H		
4111-8105	0-25mm	31	29.5	Ø6.5	133	58.5	Ø18	0.004"	33.26
4111-8110	25-50mm	56	38	Ø6.5	137.2	76	Ø18	0.004"	42.09
4111-8115	51-75mm	81	51	Ø6.5	162.7	91	Ø18	0.005"	45.66
4111-8130	125-150mm	156	89	Ø6.5	263.8	142	Ø18	0.006"	68.87



NEW PRODUCTS
SAVE UP TO 15%
 Till December 31, 2023

Dasqua® ELECTRONIC DIGITAL OUTSIDE MICROMETER WITH STAINLESS STEEL SPINDLE

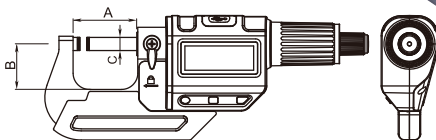
- Spindle ground twice which makes pitch error 1μ less than before and reaches world-class standard

- New special carbide used on measuring anvil instead of traditional easy-wear off carbide tip

- Stainless steel newly adapted on spindle instead of carbon steel



0-1" Range
Item 4230-2005
Sale Price \$7478 (F)



SPECIFICATIONS:

Range	Resolution	(mm)			Accuracy
		A	B	C	
0-1"/0-25mm	0.00005"/0.001mm	31.5	22.5	Ø6.5	0.00012"/0.003mm

INCH/METRIC
.0005" RESOLUTION

- With ratchet stop for constant force (5- 8N 20% higher than normal)



Dasqua® 0~0.5" DIAL INDICATOR-Group 2

- Used to measure surface flatness as well as axial runout and also used to check tool set up and squareness.
- Limit indicator clips included.
- Strictly made in accordance with DIN878.
- Casting diameter: 58mm, shank diameter: 8mm
- Satin chrome plated steel case.

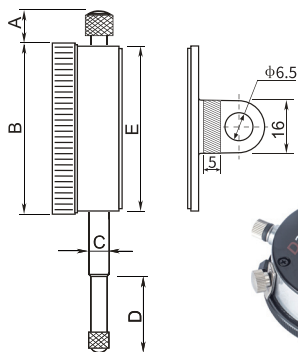
GROUP 2

DIN 878

.0005" GRADUATION

3/8" Stem

4-48 Thread



0-0.5" Range
Item 5122-4205
Sale Price \$2670 (F)

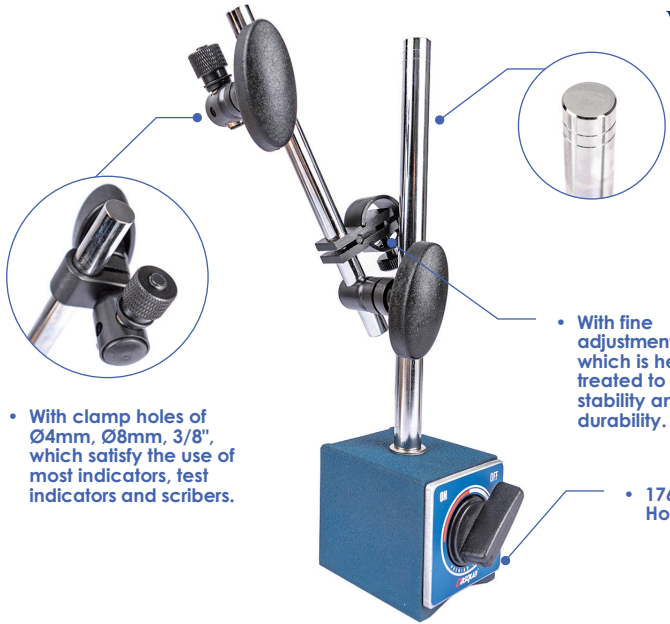
SPECIFICATIONS:

Range	Graduation	Style	(mm)					Accuracy
			A	B	C	D	E	
0-0.5"	0.0005"	lug back	10.5	58	Ø8	20.5	Ø53.5	0.0005"



NEW PRODUCTS
SAVE UP TO 15%
 * Till December 31, 2023 *

Dasqua® SUPER POWER (80 kg/176 lb) MAGNETIC BASE WITH FINE ADJUSTMENT



- With clamp holes of Ø4mm, Ø8mm, 3/8", which satisfy the use of most indicators, test indicators and scribes.

- With fine adjustment device, which is heat-treated to ensure stability and durability.

- 176 lb. Holding Power

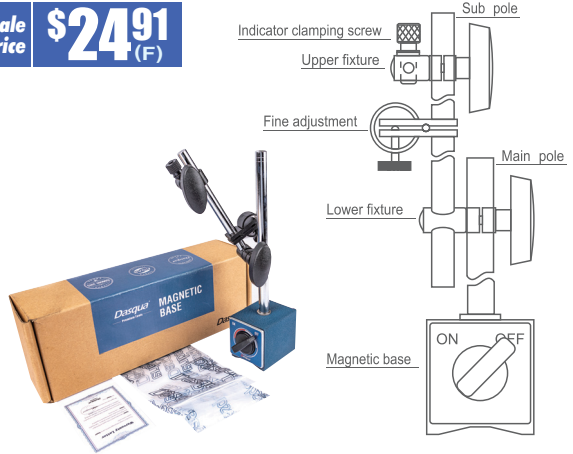
- Solid structure with surfaces electroplated and end-faces ground

- 150° V-grooved base can be placed on the cylindrical surfaces as well as flat surfaces for easily fixing the indicators.
- Well selected ferrite permanent magnet with magnetic force greater than calibration value
- On/off switch for magnet, easy to move the base without the influence of magnetic force.

Item **7123-1005**
 Sale Price **\$2491 (F)**

SPECIFICATIONS:

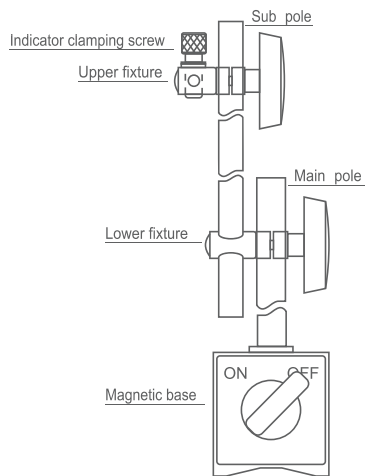
Holding Power	(mm)				Weight
	Base	Main Pole	Sub Pole	Dia. of Clamp Hold	
80kg	60x50x55	Ø12x176	Ø10x150	Ø4 / Ø8 / Ø3/8"	1.5kg



Dasqua® STANDARD MAGNETIC BASE

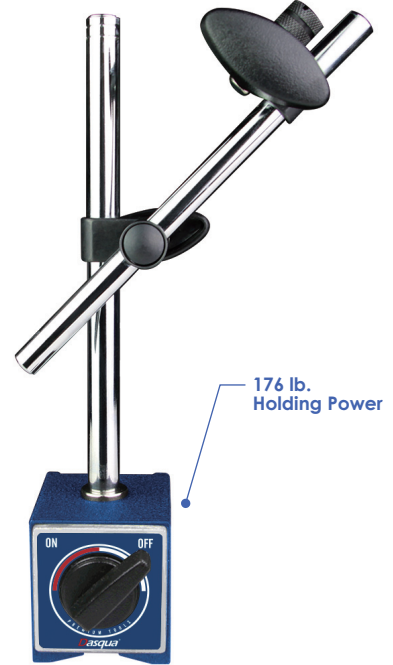
- Solid structure with electroplated surfaces, precision ground end-faces
- With clamp holes of 4mm, 8mm & 3/8", which satisfy the use of most indicators, test indicators and scribes.
- 150° V-grooved base can be placed on the cylindrical surfaces for easily fixing the indicators
- Well selected ferrite permanent magnet with magnetic force greater than calibration value
- On/off switch for magnet, easy to move the base without the influence of magnetic force

Item **7700-0010**
 Sale Price **\$2363 (F)**



SPECIFICATIONS:

Holding Power	(mm)				Weight
	Base	Main Pole	Sub Pole	Dia. of Clamp Hold	
80kg	58x50x55	Ø12x177	Ø10x165	Ø4 / Ø8 / Ø3/8"	1.6kg





2PC SLOTTED ANGLE PLATE & 1-2-3 BLOCK COMBO SETS

3x2.5x2" Angle Plate
& 1-2-3 BLOCK

Item 9999-0005

Sale Price **\$3422** (F)

4.5x3.5x3" Angle Plate
& 1-2-3 BLOCK

Item 9999-0006

Sale Price **\$3806** (F)

6x5x4.5" Angle Plate
& 1-2-3 BLOCK

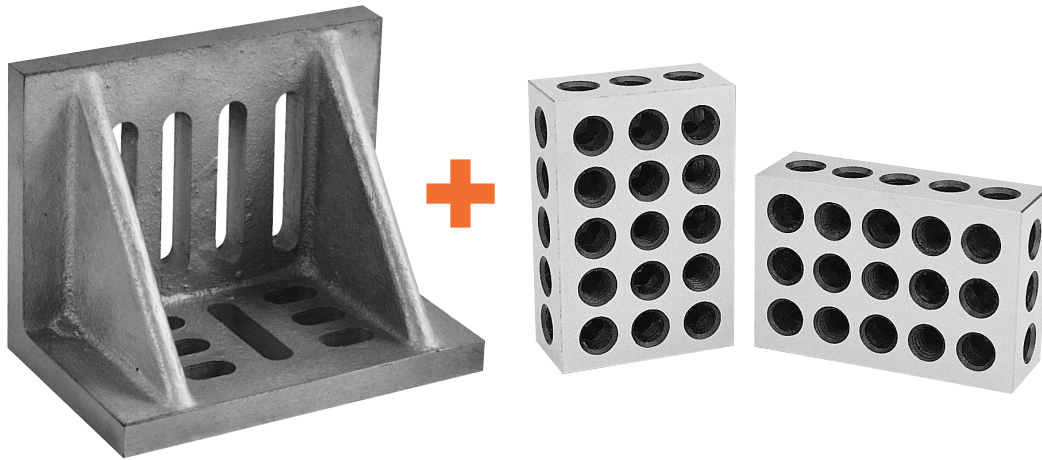
Item 9999-0007

Sale Price **\$5369** (F)

8x6x5" Angle Plate
& 1-2-3 BLOCK

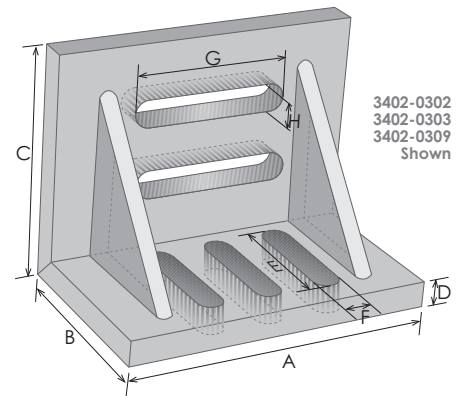
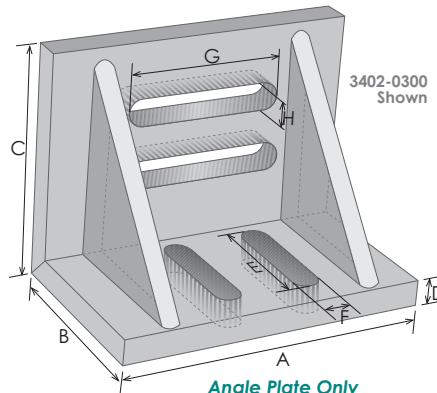
Item 9999-0004

Sale Price **\$6745** (F)



SLOTTED ANGLE PLATES -Webbed

- Made of high tensile cast iron properly seasoned against distortion.
- Clamping slots are widely used for machining, layout and inspection.
- Accurately machined and ground square and parallel on outside and ends.



MACHINE TO .002 PER 6"

Angle Plate Only

Item#	(Inch)								Wt. (lbs)
	A	B	C	D	E	F	G	H	
3402-0300	3	2.5	2	9	40	10	37	10	5
3402-0302	4.5	3.5	3	12.5	50	11	70	11	7
3402-0303	6	5	4.5	13	74	12	86	12	11
3402-0309	8	6	5	15	98	14	105	14	17

PRECISION 1-2-3 BLOCK SET

- Heat treated and case hardened to HRC 55 to 60.
- Hardened and precision ground on all 6 sides of each block.
- Accuracy with squareness on all sides within .0002" per inch.

- 23 holes consists of 5 tapped holes (3/8" - 16 for 1-2-3) for clamping and 18 untapped holes drilled.
- Cross drilling design gives minimum weight and maximum strength.
- Dimensions: 1-2-3 is 1 x 2 x 3"

**MATCHED PAIRS
AND SOLD AS PAIR**

1-2-3 Block Set Only
Item 3402-0005

5 Tapped Holes & 18 Untapped Through Holes

NEW PRODUCTS
SAVE UP TO 15%
 Till December 31, 2023

Pro-Series 6PC OPTICAL CENTER PUNCH SET

- This Optical Punch Set is indispensable when doing critical layout work. Just look down the magnifying lens and align the cross hairs or center of circle with the mark on your workpiece. Replace the magnifier with the supplied hardened tool steel punch and give it a tap.
- **Punch set includes:** a bull's eye with cross hair lens, a bull's eye with center dot and circle lens, a 60 degree punch, a 120 degree punch and a precisely manufactured of aluminum main body and a fitted case..

Lens Magnifier Power: 9x
Punch Size: 3/8"
Pin Length: 1.85"
Main Body Diameter: 1.9"



Item 8600-4118
Sale Price **\$631** (F)



DRILL CHUCK WITH KEY & ARBOR KITS

- Accurate and strong gripping force.
- For portable, bench or floor type drill presses.
- Arbors are hardened and ground.
- Supplied with chuck key.

MT Shank
 9999-0008 Shown

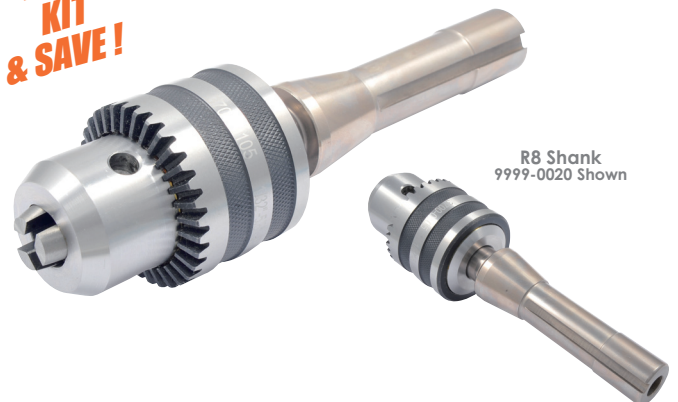


STRAIGHT SHANK
 9999-0013 Shown



BUY A KIT & SAVE!

R8 Shank
 9999-0020 Shown



Item#	Clamping Capacity	Taper Mount	Arbor Included	Sale (F)
9999-0008	1/32~3/8"	JT2	MT2	22.16
9999-0009	1/32~3/8"	JT2	1/2" Straight	20.81
9999-0010	1/32~3/8"	JT2	R8	25.83
9999-0011	1/32~1/2"	JT33	MT2	23.60
9999-0012	1/32~1/2"	JT33	MT3	24.32
9999-0013	1/32~1/2"	JT33	1/2" Straight	21.85
9999-0014	1/32~1/2"	JT33	5/8" Straight	23.92
9999-0015	1/32~1/2"	JT33	R8	27.27
9999-0016	1/8~5/8"	JT3	MT3	26.07
9999-0017	1/8~5/8"	JT3	MT4	29.02
9999-0018	1/8~5/8"	JT3	5/8" Straight	25.92
9999-0019	1/8~5/8"	JT3	3/4" Straight	24.62
9999-0020	1/8~5/8"	JT3	R8	29.02
9999-0022	3/16~3/4"	JT3	3/4" Straight	53.86
9999-0023	3/16~3/4"	JT3	R8	58.63

NEW PRODUCTS

SAVE UP TO 15%

Till December 31, 2023

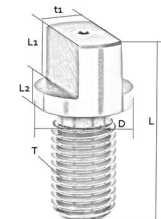
TANG SCREWS FOR DRAWBAR END HOLDERS (INCH)

- Precision made from tool steel, hardened.
- Inch thread.

Item#	Morse Taper	Thread	Dimensions (mm)				Sale (F)
			D	L	L1	L2	
3906-0795	MT2	3/8"-16	12	30	7	4	5.78
3906-0796	MT3	3/8"-16	17	40	12	4	6.12
3906-0797	MT4	5/8"-11	24	46	13	5	6.78

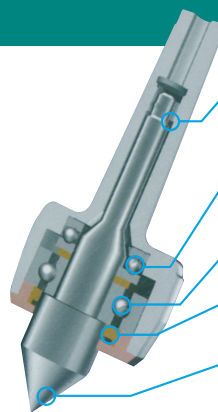
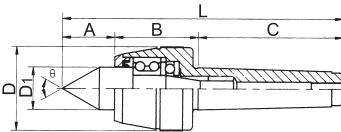
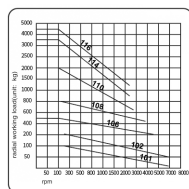


Tang for draw bar thread type holders



HARLINGEN HIGH PRECISION CNC LIVE CENTERS

- High concentricity and stability thanks to high accuracy bearing system.
- Tip has 60° included angle.
- Body is hardened for extra strength and extra rigidity
- Life time lubrication for minimum required maintenance.
- Maximum concentricity deviation for ultra precision
- Point is made of high quality alloy steel, heat treated to hardness HRC62.

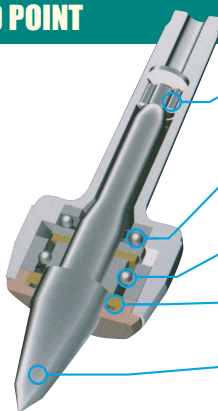
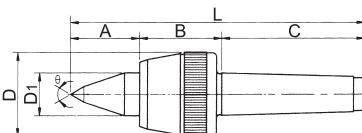
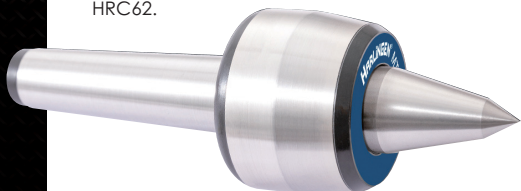
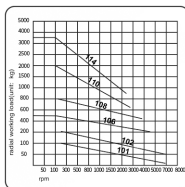


- **NEEDLE BEARING**
Coarse clearance fit design in supporting structure counteracts heat preventing the deformation during use.
- **THRUST BALL BEARING**
The bearing has a hardened frame providing good rigidity and accuracy strengthening the axial load.
- **BALL BEARING**
The front support bearing provides high speed rotating and accuracy.
- **SEAL RING**
Prevents coolant and other scraps from settling in extending centers life.
- **CENTER SPINDLE**
made of high quality alloy steel, hardened to HRC62, which allows good rigidity and wearability.

Item#	Morse Taper	T.I.R.	Dimensions (Inch)					OAL (L)	Load Rate lbs.	Max. RPM	Weight lbs	Sale (F)
			A	B	C	D	D1					
9741-3232	2	.0002"	0.94	1.61	2.52	1.77	0.79	5.08	165	7000	1.10	119.12
9741-3233	3	.0002"	1.22	1.91	3.19	2.36	0.98	6.32	500	5000	2.86	143.99
9741-3234	4	.0002"	1.61	2.42	4.04	2.76	1.26	8.07	1000	3800	5.06	162.97
9741-3235	5	.0004"	1.99	3.09	5.10	3.54	1.57	10.18	1200	3000	10.34	251.98

HARLINGEN HIGH PRECISION CNC LIVE CENTERS-EXTENDED POINT

- Especially suited for cramped work areas between center point and workpiece.
- High concentricity and stability provides high accuracy bearing system.
- Tip has 60° included angle.
- Body is hardened for extra strength and extra rigidity.
- Life time lubrication for minimum required maintenance.
- Maximum concentricity deviation for ultra precision
- Point is made of high quality alloy steel and heat treated to hardness HRC62.



- **NEEDLE BEARING**
Coarse clearance fit design in supporting structure counteracts heat preventing the deformation during use.
- **THRUST BALL BEARING**
The bearing has a hardened frame providing good rigidity and accuracy strengthening the axial load.
- **BALL BEARING**
The front support bearing provides high speed rotating and accuracy.
- **SEAL RING**
Prevents coolant and other scraps from settling in extending centers life.
- **CENTER SPINDLE**
made of high quality alloy steel, hardened to HRC62, which allows good rigidity and wearability.

Item#	Morse Taper	T.I.R.	Dimensions (Inch)					OAL (L)	Load Rate lbs.	Max. RPM	Weight lbs	Sale (F)
			A	B	C	D	D1					
9741-0232	2	.0002"	1.34	1.61	2.52	1.77	0.79	5.47	200	7000	1.50	134.17
9741-0233	3	.0002"	1.85	1.91	3.19	2.36	0.98	6.95	360	5000	3.25	160.35
9741-0234	4	.0002"	2.09	2.42	4.04	2.76	1.26	8.54	800	3800	6.20	192.42
9741-0235	5	.0004"	2.56	3.09	5.10	3.54	1.57	10.75	1200	3000	12.50	264.42

NEW PRODUCTS
SAVE UP TO 15%

* Till December 31, 2023 *

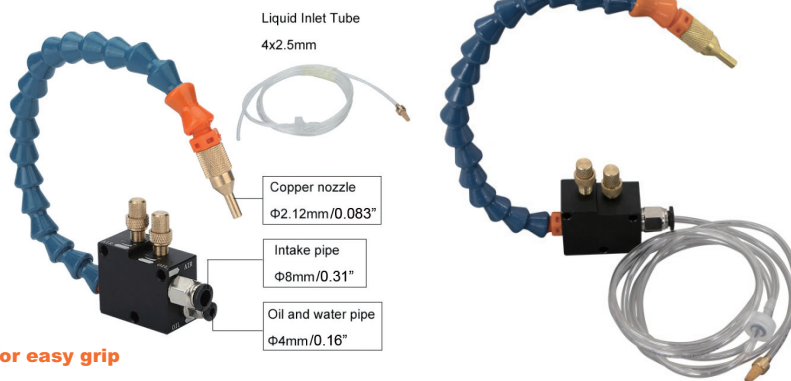
MIST COOLANT SPRAYER

- Economy coolant spray unit for a variety of applications using water or coolants.
- Three 5mm mounting holes in the base provide flexibility in locating the unit whose overall width is 46mm and height 40mm.
- The 31cm (12.2") spray hose is easily shaped to point your nozzle at the precise location needed.
- Brass nozzle and knobs prevent rust and surfaces are knurled for easy control.
- Air and coolant intakes use a push-type attachment. The air intake is 8mm and the liquid intake is 4mm.
- The fluid hose included has a 2.5mm internal diameter, a backflow preventer and a filter.

- Use with standard air compressor (not included) with pressure range of 30 - 150 PSI.
- The system is suitable for use with any type of soluble coolant or oil (non-corrosive).
- Use with fluids that have a viscosity at 68 cSt or less.

Item 8401-0199
Sale Price **\$3570** (F)

Flexible nozzle hose to reach any angle
Easy to connect line via push-in connections
Durable copper knobs for flow control, knurled surfaces for easy grip
Line filter and backflow preventor



53PC INCH/METRIC TRANSFER PUNCH COMBO SET

- Used for transferring threaded, drilled and tapped holes.
- Undersize .0025".
- Heat treated tempered tool steel for longer life.
- Black oxide finish.
- **28pc Set Range: 3/32~1/2" by 64ths & 17/32"**
- **25pc Set Range: 1~33mm by 0.5mm**

BUY COMBO SET & SAVE!



28PC & 25PC COMBO SET
Range: 3/32~1" & 1-33mm
Item 8600-0054
Sale Price **\$3102** (F)

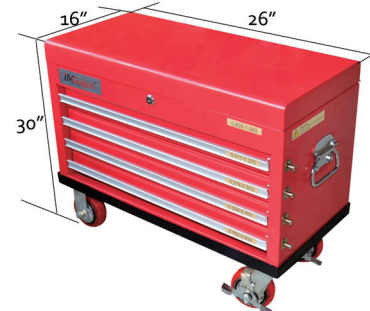
HIGH PRECISION STEEL PIN GAGE 990PC LIBRARY SET (0.011-1.000") WITH CUSTOM DRAWER SYSTEM

- **Metal drawer system**
- Minus set: -0.0002"/+0.0000"
- .001" set increments, sizes marked on each pin gage.
- Made of tool steel and hardened to HRC60-62
- Finish to 10 micro or better
- Class ZZ
- OAL: 2"
- 8 pin gage handles included

Accuracy -0.0002"/+0.0000"

Application:

- Checking locations
- Measuring hole sizes and depths
- Go and No-Go gaging
- Setting micrometers
- Checking distances between holes



990 PC SET
0.011~1.000" Range
Item 4101-0060
Sale Price **\$1,78245** (E)

Wt. 249 Lbs.